

4.1.5 Holy Cross and St Giles Figures

Holy Cross

The images which follow are intended to serve as illustrations to the text which they are published alongside. It is intended that that the quality of the images will be improved for publication: the figures should simply be taken as placeholders until that time.

Images from the collections of Shropshire Archives are reproduced here with their permission.

May 2023



Figure 1. Holy Cross church, west front.
Image: Wendy Horton/VCH Shropshire, 2022



Figure 2. Holy Cross, view from south-west, 2022.
Image: Wendy Horton/VCH Shropshire, 2022

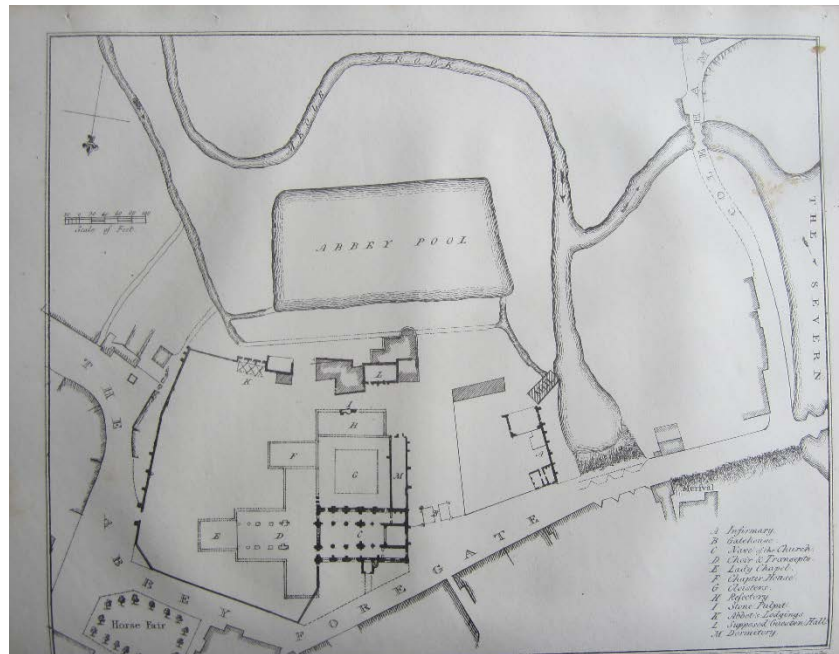


Figure 3. Plan by John Carline Jun., c.1825. Owen and Blakeway, Shrewsbury, II, plate opp p. 83. Image: VCH Shropshire.



Figure 4. South aisle and clerestory, 2022. Figure 1. Holy Cross church, west front.
Image: Wendy Horton/VCH Shropshire, 2022



Figure 5. Norman north door. Figure 1. Holy Cross church, west front.
Image: Wendy Horton/VCH Shropshire, 2022

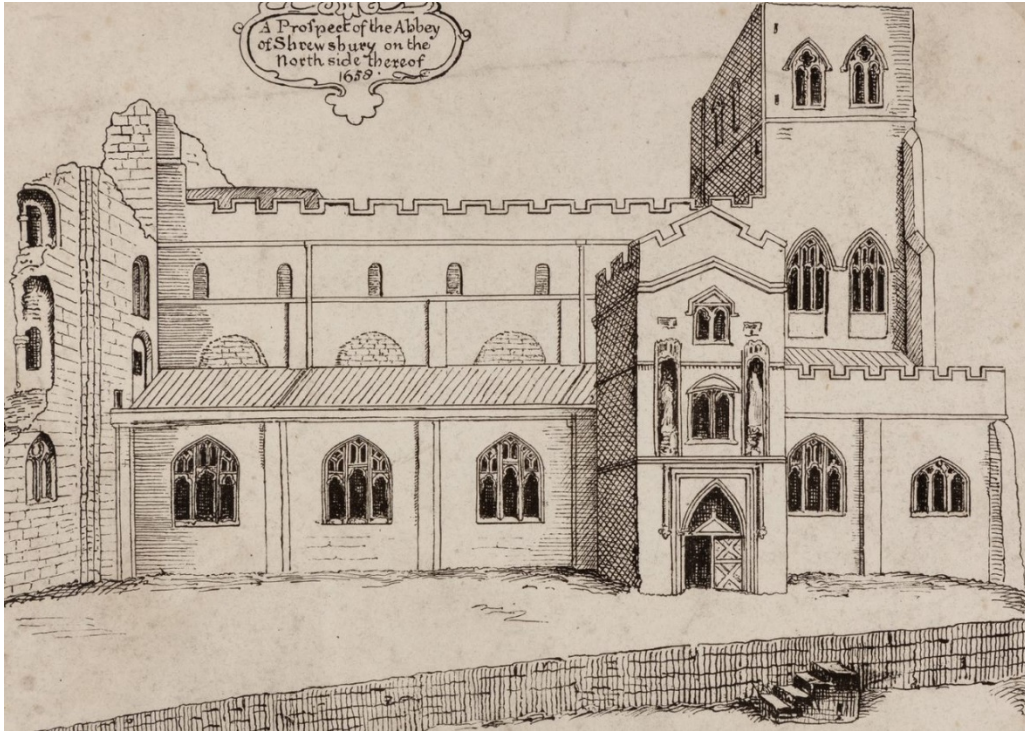


Figure 6. A prospect of the abbey of Shrewsbury on the north side thereof, 1658. From an original drawing of Francis Sandford in the Herald's College, London. SA, PR/2/328.



Figure 7. South transept arches, 2022. Figure 1. Holy Cross church, west front.
Image: Wendy Horton/VCH Shropshire, 2022



Figure 8. North aisle and arcade, 2022.
Image: Wendy Horton/VCH Shropshire, 2022



Figure 9. South arcade pier, 2022.
Image: Wendy Horton/VCH Shropshire, 2022



Figure 10. North porch, 2022.
Image: Wendy Horton/VCH Shropshire, 2022



Figure 11. Door to north porch chamber.
Image: Wendy Horton/VCH Shropshire, 2022



Figure 12. North transept window.
Image: Wendy Horton/VCH Shropshire, 2022



Figure 13. West view of Shrewsbury Abbey by Nathaniel Buck, 1731.
Image: SA, PR/3/271.



Figure 14. Charlton tomb and piscina, 2022.
Image: Wendy Horton/VCH Shropshire, 2022



Figure 15. Tower arch, 2022.
Image: Wendy Horton/VCH Shropshire, 2022

Image: Wendy Horton/VCH Shropshire, 2022



Figure 16. Fourteenth-century arcade, north-west.
Image: Wendy Horton/VCH Shropshire, 2022



Figure 17. Watercolour, anon., east end of side aisle, pre-1882.
Image: SA, PR1/1/402.

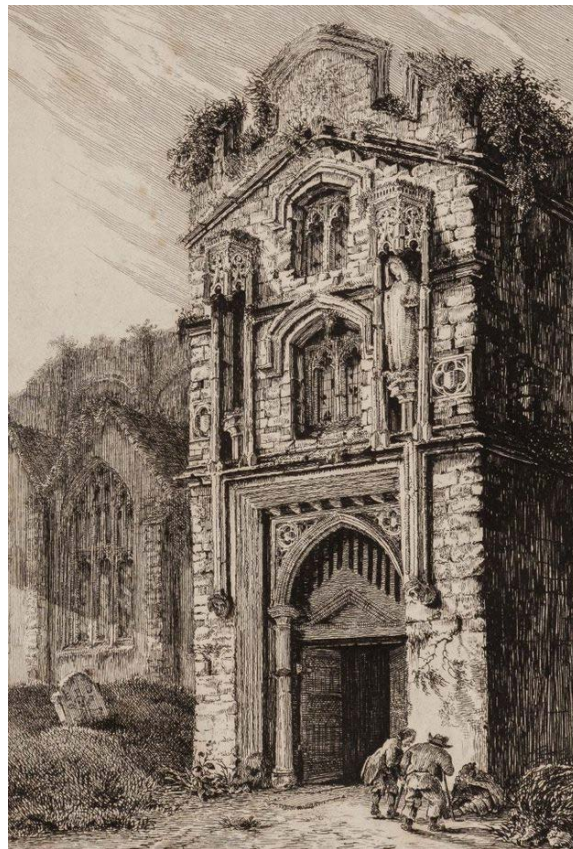


Figure 18. Etching of north porch, E. P. Owen, c. 1825.
Image: SA, PR/2/332.



Figure 19. Watercolour view from north-east, Edward Williams, 1788.
Image: SA, 6001/372/1/53.

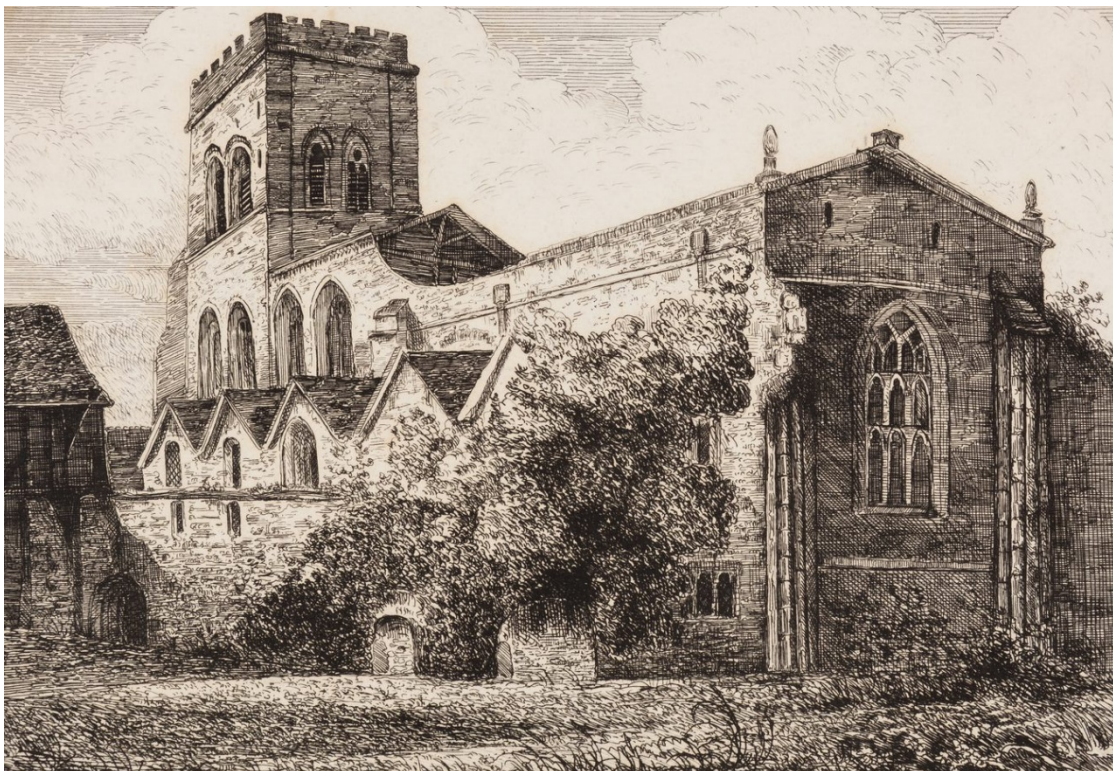


Figure 20. Etching from the south-east, William Pearson, 1807.
Image: SA, PR/2/323.



Figure 21. North elevation, 2022.
Image: Wendy Horton/VCH Shropshire, 2022



Figure 22. Drawing of the West Gallery, John Buckler, 1821.
Image: BL, Add Ms 36378.

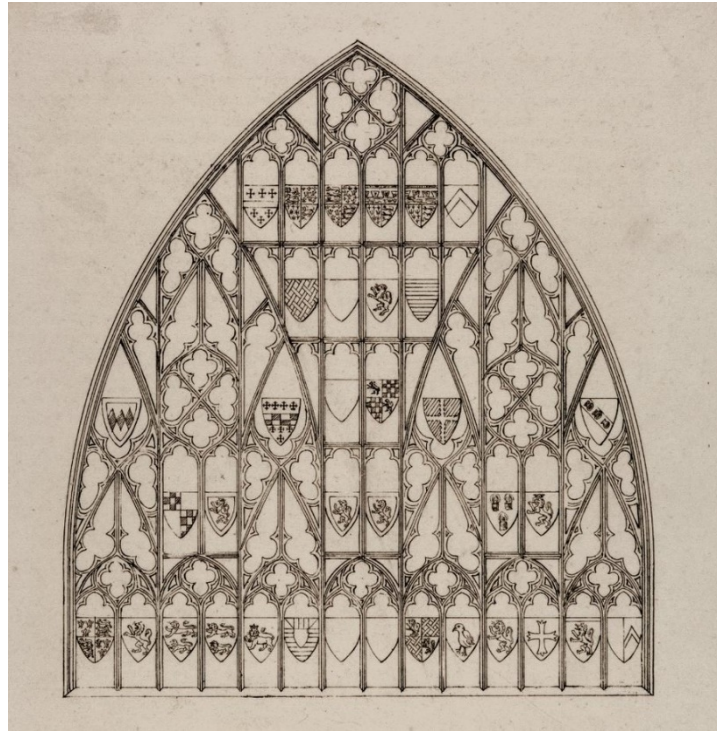


Figure 23. 'The figure of the upper part of the west window in the steeple of the Abbey church in the suburbs of Shrewsbury with the arms therein contained'. From Francis Sandford's drawing in the Herald's college, 1658.

Image: SA, PR/2/333.



Figure 24. Photograph of the exterior of the east end, 1870s.

Image: SA, PH/S/13/A/1/57.

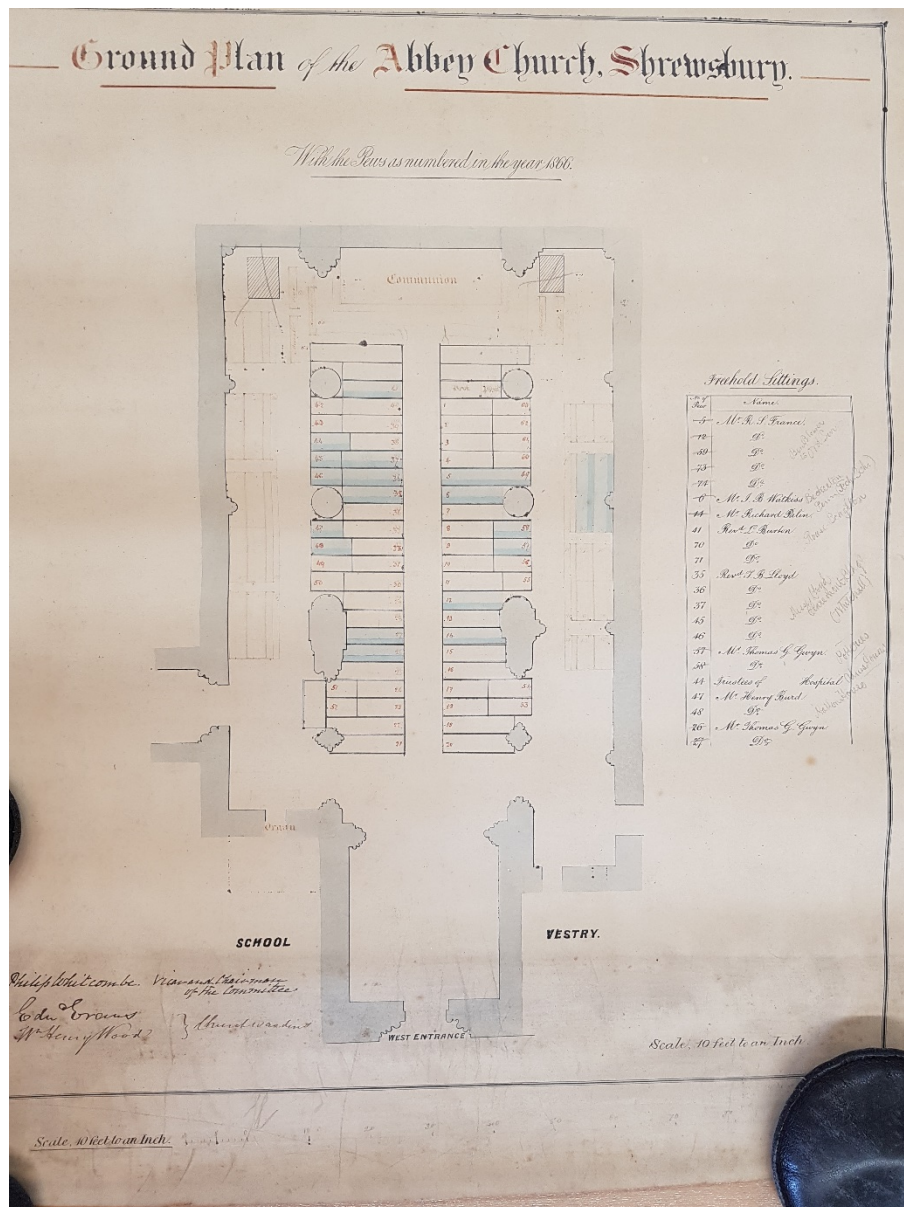


Figure 25. Plan with numbered pews, 1866.
Image: SA, P250/B/41/2.

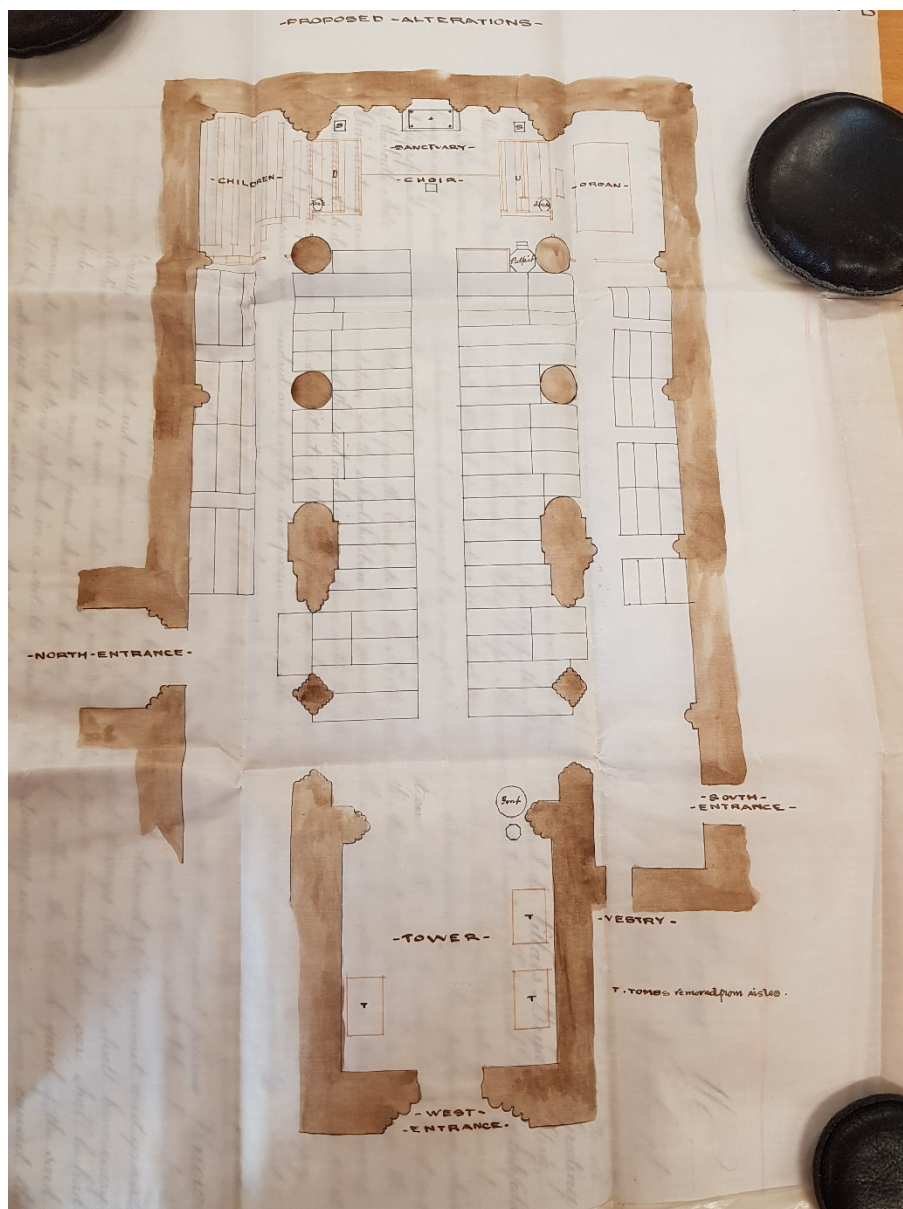


Figure 26. Plan for re-ordering, J. Randal, 1882.
Image: SA, P250/B/41/3.



Figure 27. Proposed south front, J. L. Pearson, 1886.
Image: SA, P250/30/3.

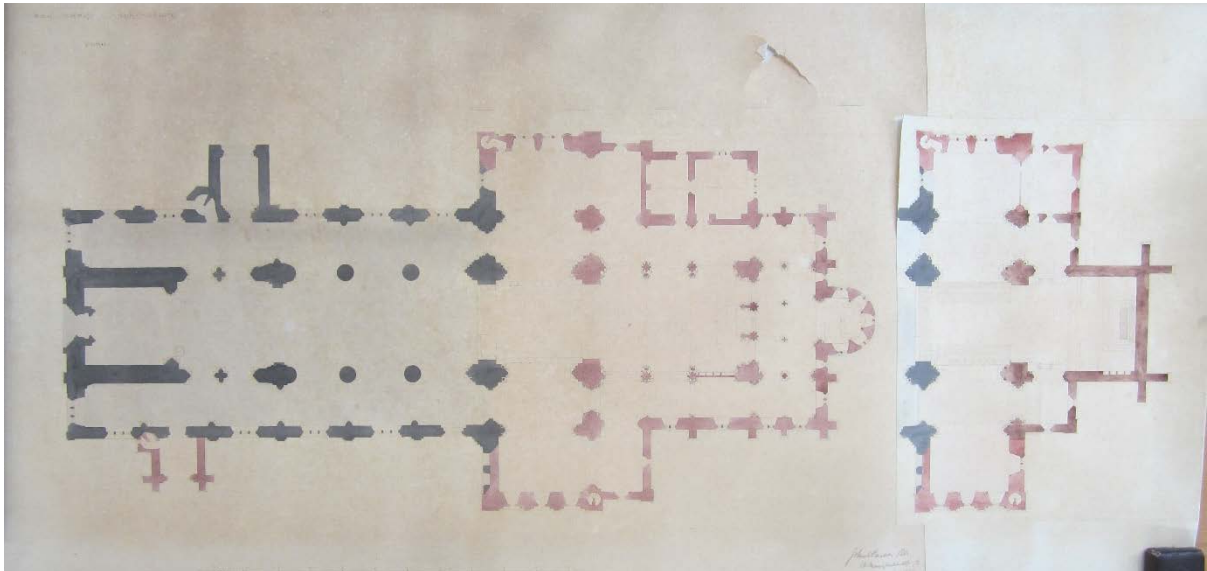


Figure 28. Proposed plan, J. L. Pearson, 1886.
Image: SA, P250/30/2.

4_1_5_Holy_Cross_and_St_Giles_figures

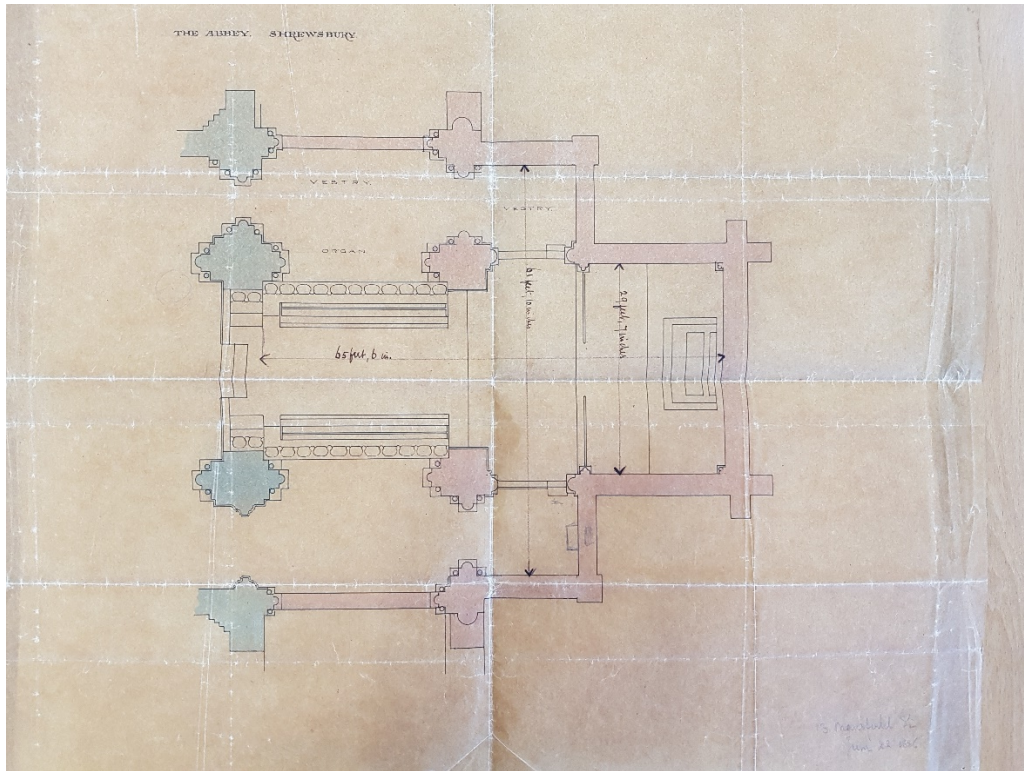


Figure 29. Actual plan, J. L. Pearson, 1886.

Image:

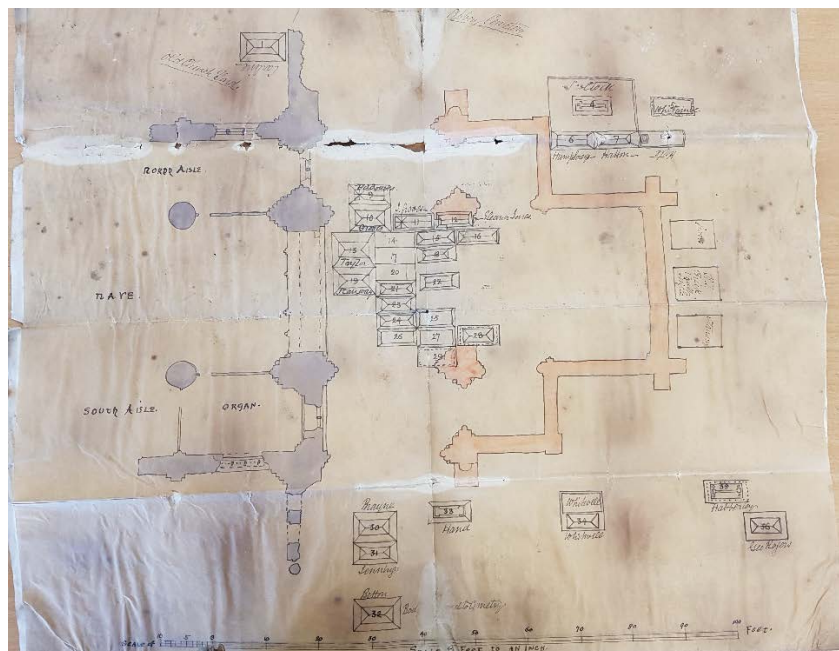


Figure 30. Plan of graves, John Nurse, 1886.

Image: SA, P250/B/50/1.



Figure 31. Exterior view of Pearson's chancel from the south-east.
Image: Wendy Horton/VCH Shropshire, 2022



Figure 32. East end.
Image: Wendy Horton/VCH Shropshire, 2022



Figure 33. The sanctuary.
Image: Wendy Horton/VCH Shropshire, 2022



Figure 34. Font of 1653 and screen by F. P. Owen, c. 1825.
Image: SA, 6001/199.



Figure 35. Medieval carved stone block.
Image: Wendy Horton/VCH Shropshire, 2022



Figure 36. Decorated screen fragments.
Image: Wendy Horton/VCH Shropshire, 2022



Figure 37. Pulpit, J. L. Preston, 1886.
Image: Wendy Horton/VCH Shropshire, 2022

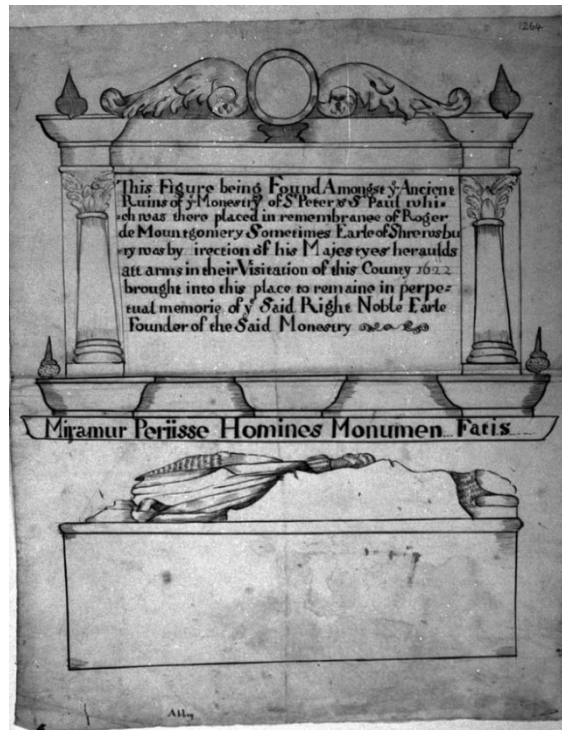


Figure 38. Monument ascribed to R. Montgomery, sketch. c. 1733.
Image: SA, SA-IMG1680 (Cadbury Library, University of Birmingham)



Figure 39. Effigy of a judge.
Image: Wendy Horton/VCH Shropshire, 2022

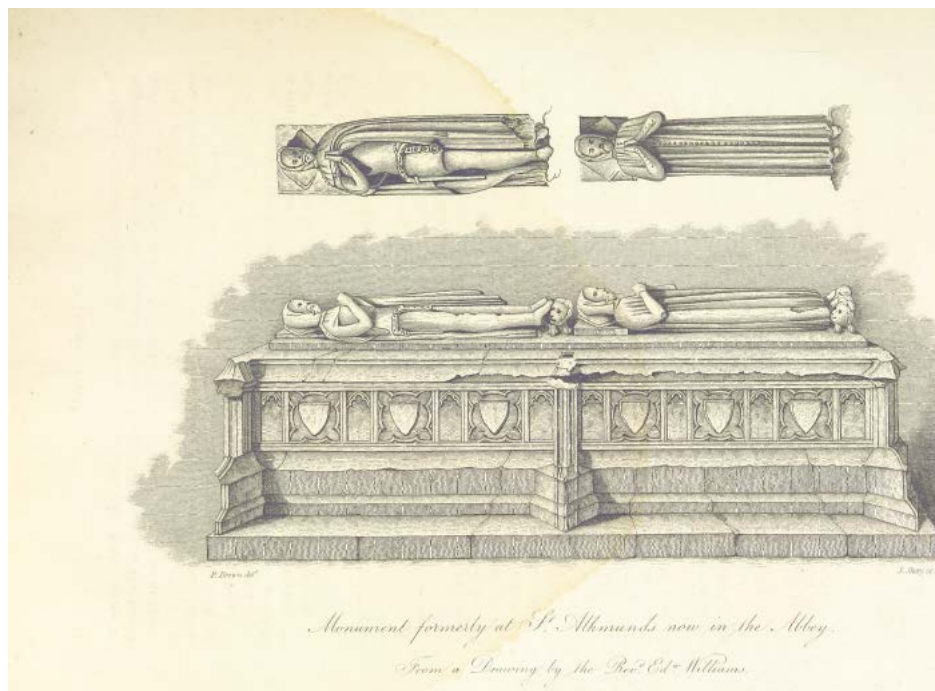


Figure 40. Chest tomb for two hermits, after Edward Williams.
Owen and Blakeway, ii, 15.



Figure 41. Wall monument to the Prince family, sketch, c. 1733.
SA, SA-IMG2428 (Cadbury Library, University of Birmingham)

4_1_5_Holy_Cross_and_St_Giles_figures

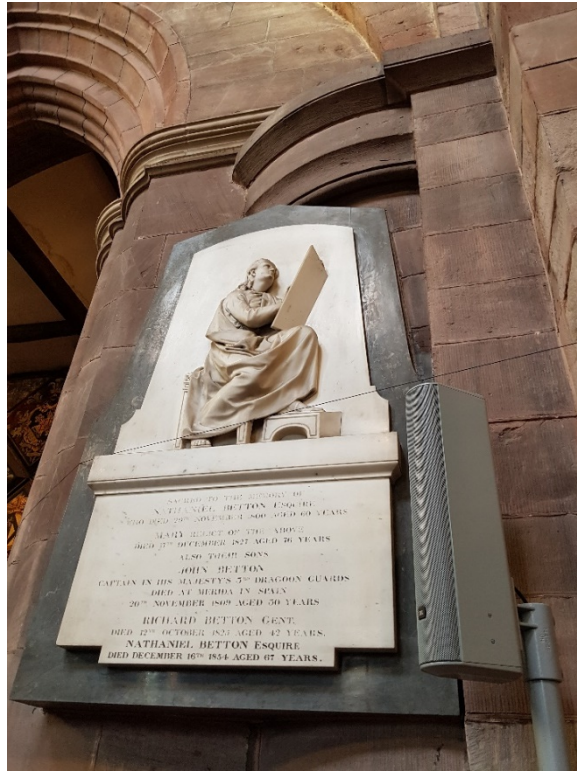


Figure 42. Monument to Nathaniel Betton, d. 1800.
Image: Wendy Horton/VCH Shropshire, 2022



Figure 43. Window by John Betton, 1806.
Image: Wendy Horton/VCH Shropshire, 2022



Figure 44. East boundary wall and gate, painting by David Parkes.
Image: SA 7675/99.

St Giles



Figure 45. St Giles church, south view, 2022.
Image: Wendy Horton/VCH Shropshire, 2022



Figure 46. St Giles, south doorway
Image: Wendy Horton/VCH Shropshire, 2022

4_1_5_Holy_Cross_and_St_Giles_figures



Figure 47. Plan of church, 1768.
Image: SA, 6001/299.



Figure 48. North arcade, Eva Burton, c. 1860.
Image: SA, PR/2/379.

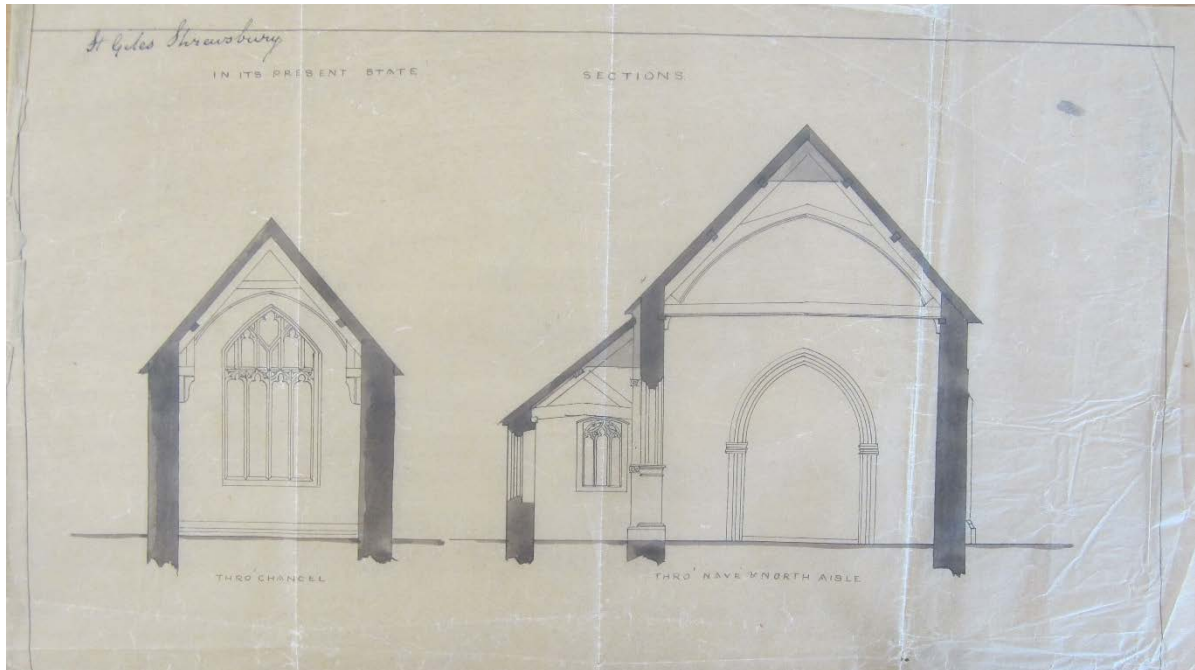


Figure 49. Interior west view, Ewan Christian, 1854.
Image: SA, P255/B/6/2a.



Figure 50. Water colour from south-east, Edward Williams, 1788.
Image: SA, 6001/372/1/54.



Figure 51. North-east view. Drawing by John Buckler, 1813.
Image: BL Add. Ms 36378.

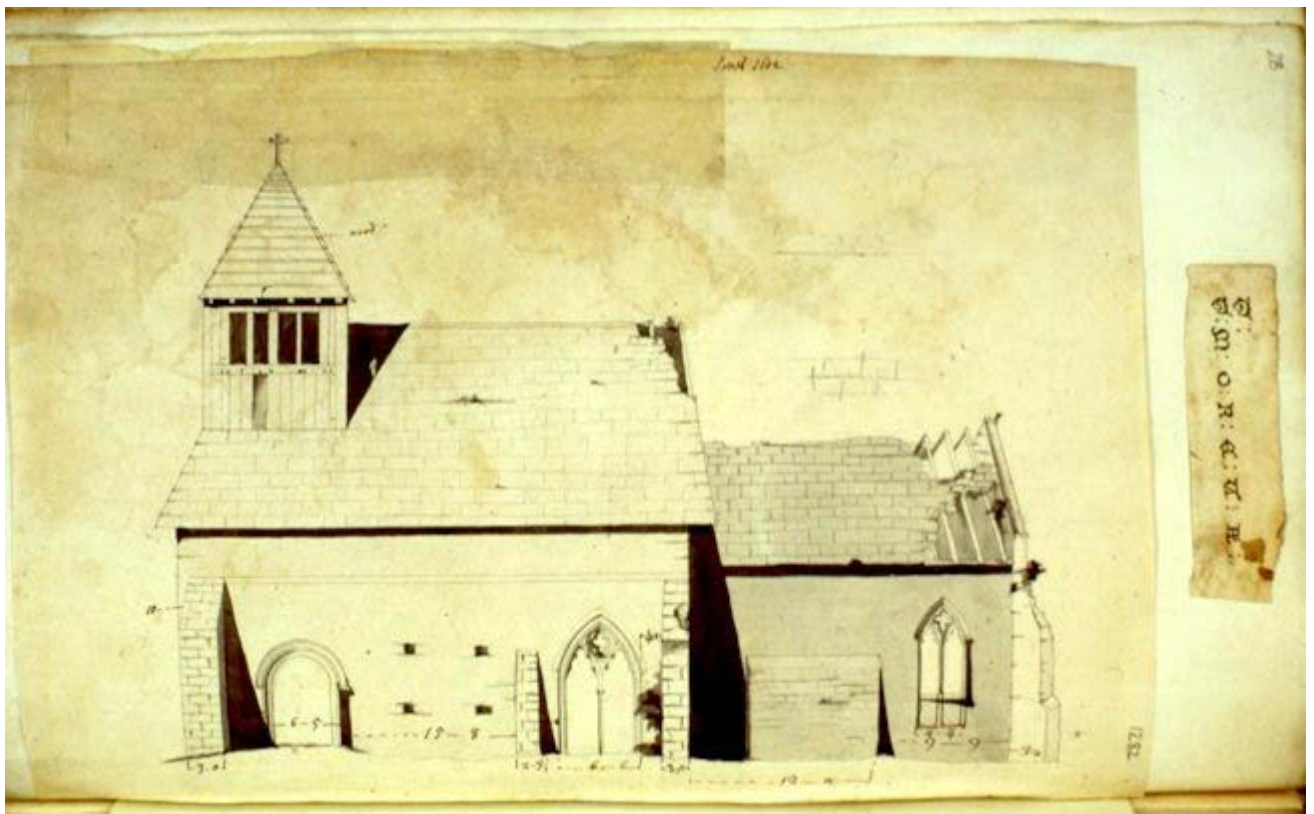


Figure 52. Measured drawing of the front elevation. c. 1733.
Image: SA, SA_IMG2430



Figure 53. Painting from south by John Homes Smith, pre-1861.
Image: SA, 6009/179.

4_1_5_Holy_Cross_and_St_Giles_figures

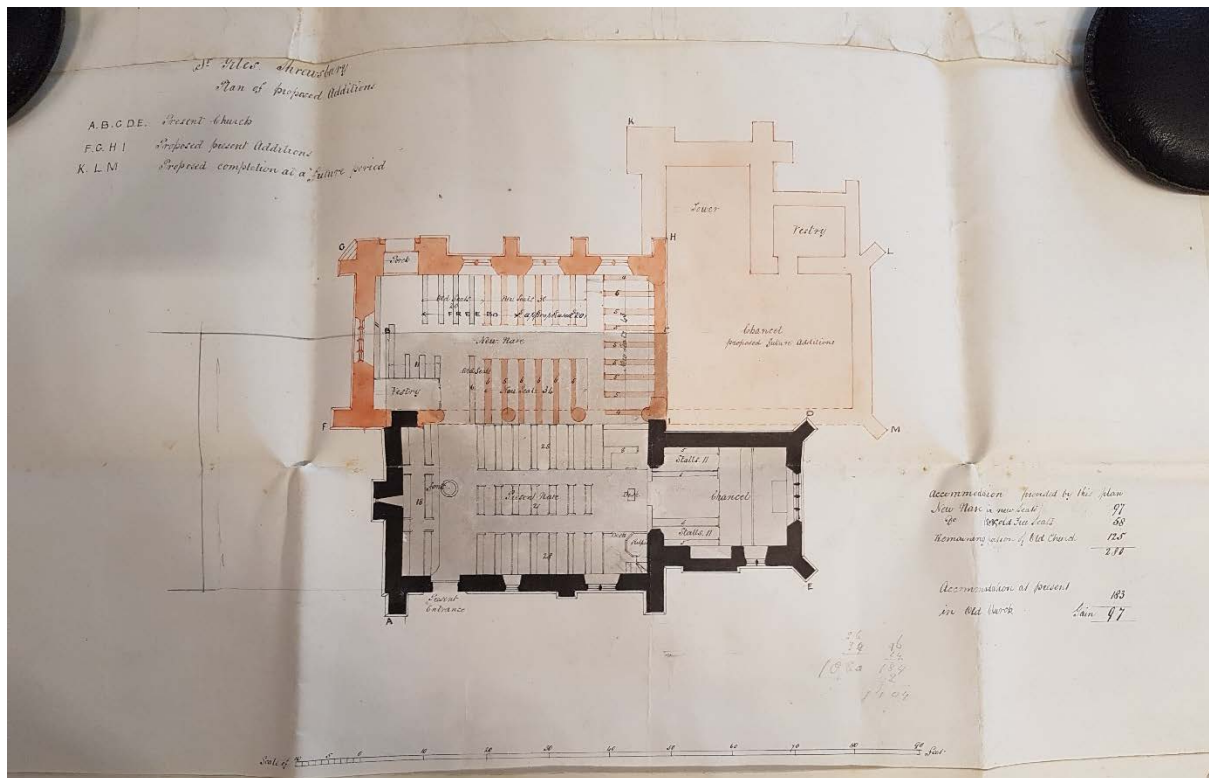


Figure 54. Proposal plan, Samuel Pountney Smith, 1860.
Image: SA, P255/B/6/14.

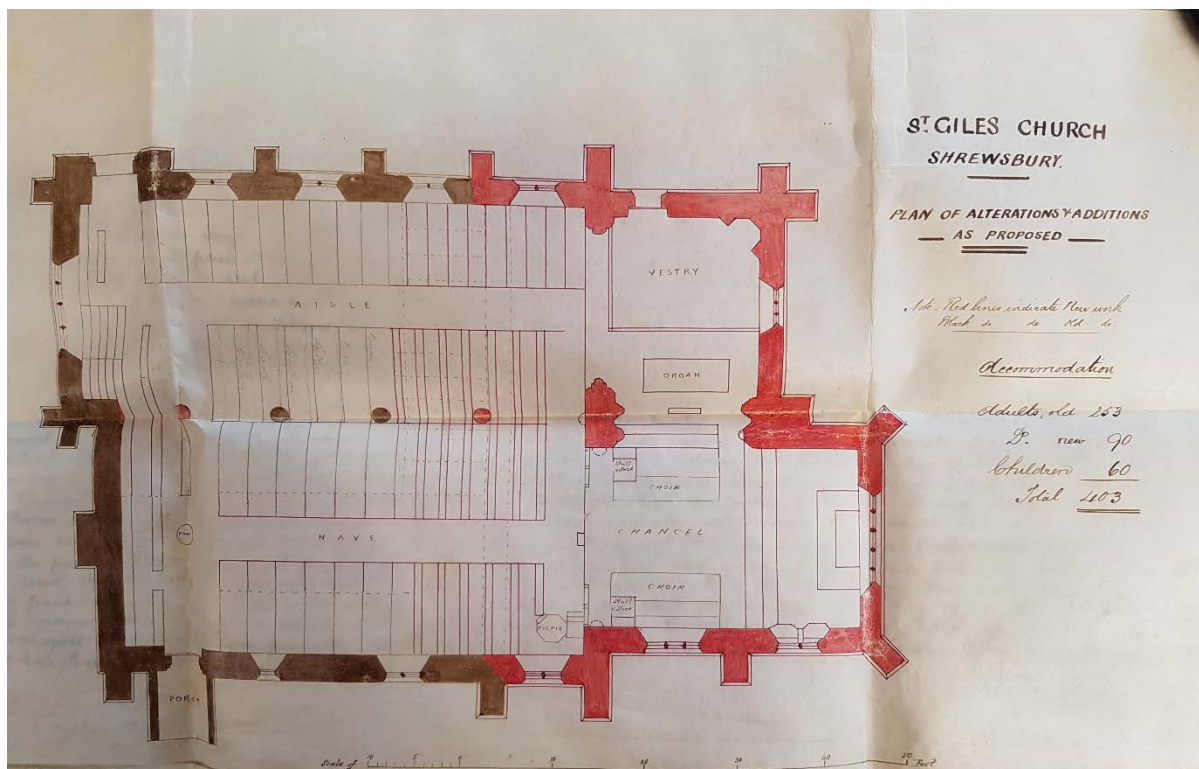


Figure 55. Proposed plan, J. L. Randal, 1871.
Image: SA, P255/B/6/21.



Figure 56. Moved and reconstructed chancel arch.
Image: Wendy Horton/VCH Shropshire, 2022



Figure 57. Piscina and reconstructed tomb recess.
Image: Wendy Horton/VCH Shropshire, 2022



Figure 58. Photograph of south front, 1891.
Image: SA, PH/S/13/W/3/1.

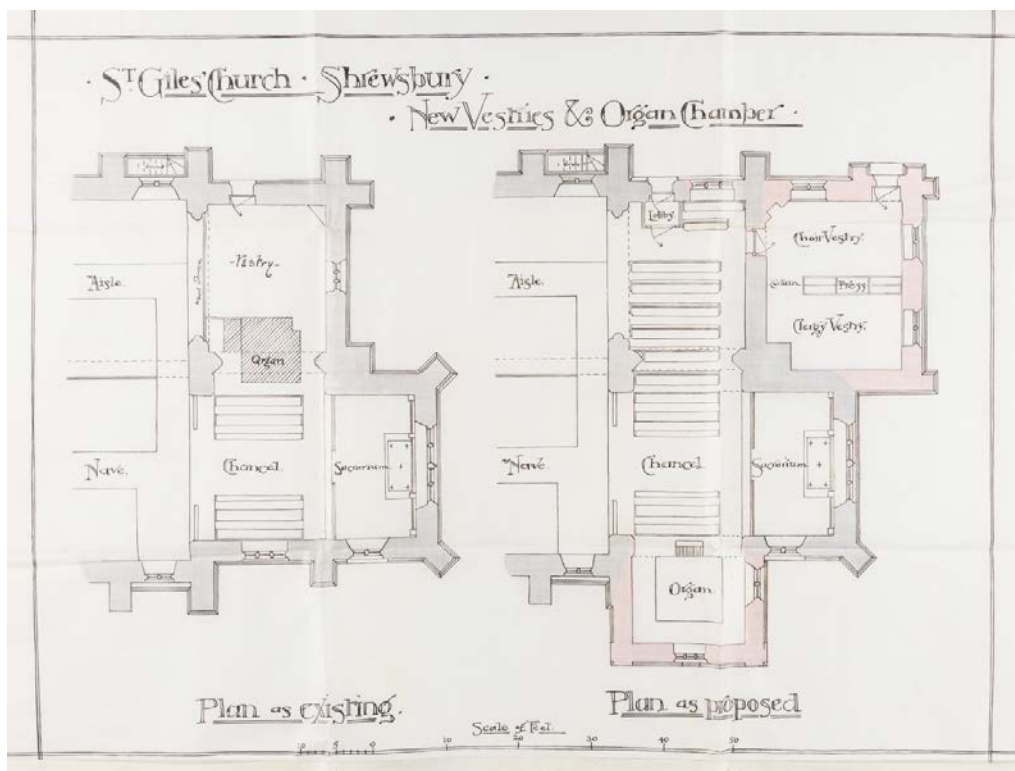


Figure 59. Plans by A. E. Lloyd Oswell, 1895.
Image: SA, P255/B/7/5/1.



Figure 60. West end.
Image: Wendy Horton/VCH Shropshire, 2022



Figure 61. South front detail.
Image: Wendy Horton/VCH Shropshire, 2022



Figure 62. North arcade.
Image: Wendy Horton/VCH Shropshire, 2022



Figure 63. Interior looking east.
Image: Wendy Horton/VCH Shropshire, 2022



Figure 64. Norman font.
Image: Wendy Horton/VCH Shropshire, 2022



Figure 65. Drawings of coffin slabs, Hugh Owen, c.1825.
Image: SA, 6001/199.

4_1_5_Holy_Cross_and_St_Giles_figures

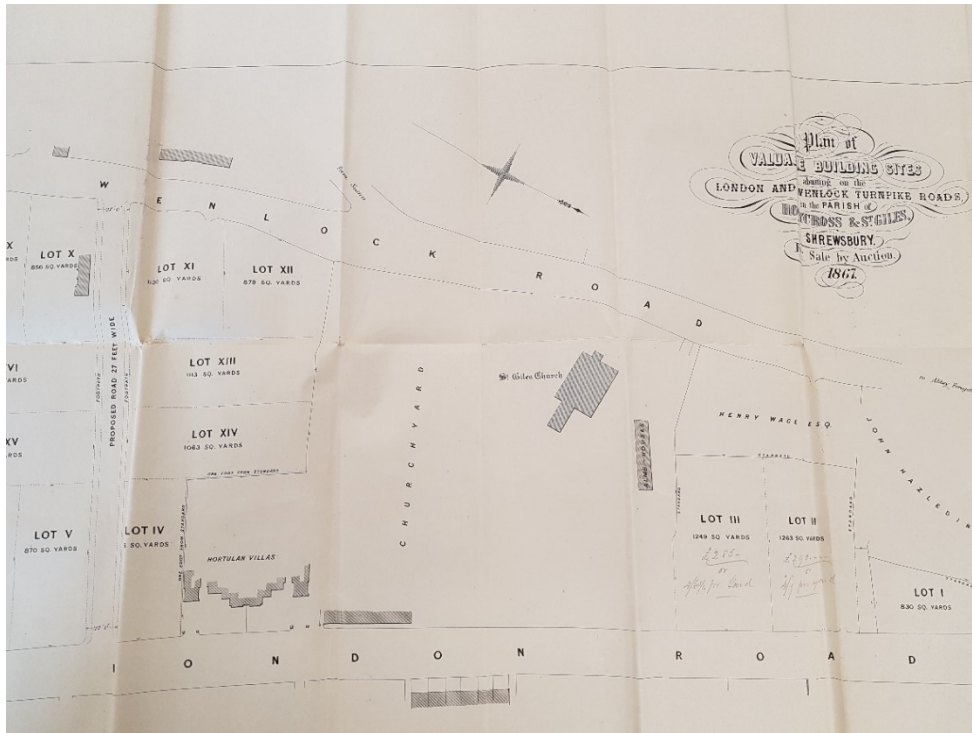


Figure 66. Plan of graveyard and proposed building plots, 1867.
Image: SA, P255/V/1/2.



Figure 67. Churchyard cross.
Image: Wendy Horton/VCH Shropshire, 2022